

# Gnome Bakers Apron by Andi Metz

This is a one size fits most pattern.

Adjustments can be made to the Apron Lower Body and Sash if you need it larger or smaller.

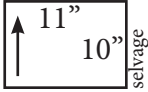
Use .25" seam allowance

You will need:

Fabric 1 - Sweet Trellis-12830_yellow .....	.375 yd
Fabric 2 - Busy Baking Gnomes-12831_multi .....	1.125 yd
Fabric 3 - Sweet Flowers-12832_white .....	.625 yd

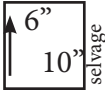
  

From Fabric 1 cut: \*This fabric is directional

Piece F-Apron Upper Body..... Cut (2) 11" x 10" 

Piece D-Pocket .....

From Fabric 2 cut: \*This fabric is directional

Piece A-Apron Lower Body..... Cut (2) 26" x 20"   
*(Cut smaller or larger than 26" for your size)*

From Fabric 3 cut:

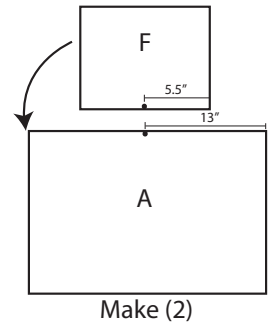
Piece B-Apron Waist Sashes .....

Piece C-Apron Waist .....

Piece E-Neck Strap.....



Measure and mark the center point of A at the top, this will be 13" from edge (adjust if you've altered the width). Repeat for other A.

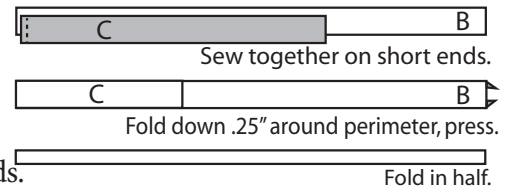


Measure and mark the center point of F at the bottom, this will be 5.5" from edge. Repeat for other F.

Match center point of A to center point of F. Pin right sides together. Sew together. Repeat for other set. Press seam up.

Press .25" wrong sides together on both long edges of E. Fold E in half lengthwise with wrong sides together so it measures 1" x 26". Top stitch closed.

Sew short end of B to C. Sew the short end of the other B to the other end of C. \*\*If you need to make larger, add the extra strips on one end of each B. Press seams open.

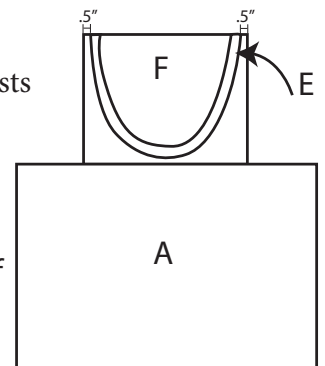


Press in .25" around all sides (Wrong side to wrong side). Pin Fold so your sash measures 2.25" tall.

Test by tying around your waist to see if there is excess fabric that you want to trim. **If there is excess fabric**, trim from both ends and press .25 on short ends.

Pin raw edge of E to top edge of F starting .5" in from side edge of F. Pin the other end of E to top edge of F .5" in from other side of F. \*\*Make sure E is laying flat and you don't have any twists in E. Test to make sure the length works for you, adjust if necessary. Pin loose areas of E so it won't get caught when sewing the perimeter of apron.

Pin Strap on apron front. Adjust length if necessary



Pin the two apron pieces right sides together. The neck strap E should be inside.

Sew around the perimeter of the apron leaving an opening for turning at the bottom. Turn right side out and press.

Fold D in half with right sides together so it measures 5" x 6". Sew around perimeter leaving an opening for turning. Turn right side out. Tuck in seam allowance and sew closed. Repeat for the other Piece 2.

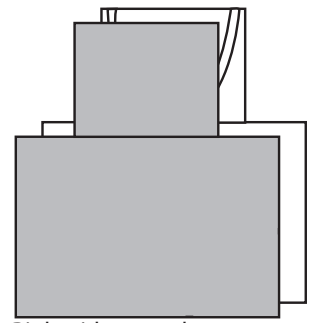
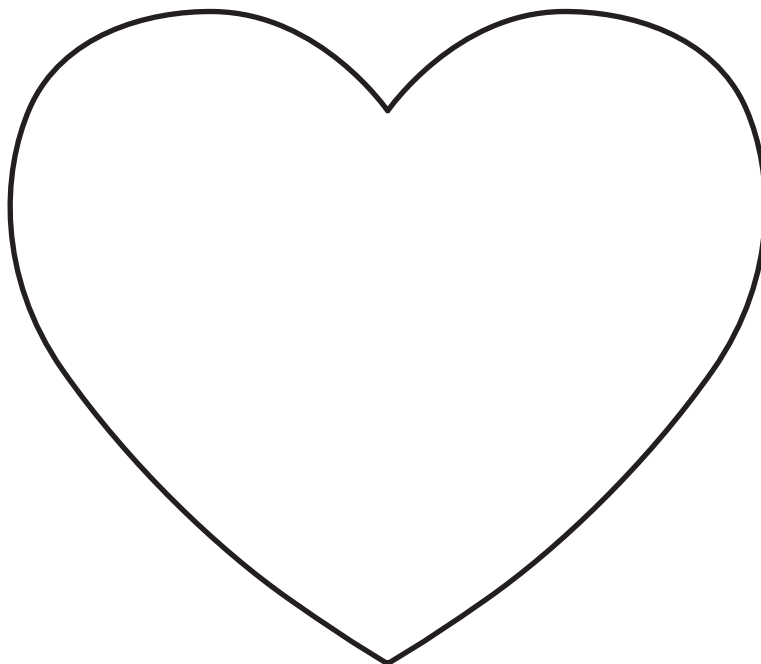
Pin D to A approximately 4.5" from side and 10" up from bottom of A. Repeat for other pocket for other side of apron. \*\*You want the pockets in a comfortable spot for you so make adjustments if necessary.

Sew around the three sides to create the pocket.

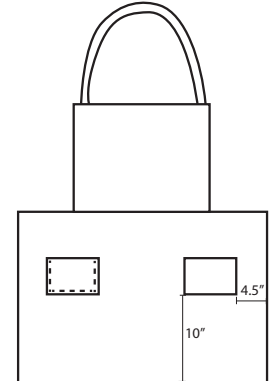
Center, pin and sew the sash to apron body at the waist where F and A meet. You will sew the whole perimeter of the sash so it is closed and attached.

Trace the heart onto the upper apron F, topstitch the heart with a decorative stitch OR trace heart on the excess of fabric 2. Applique heart to upper apron.

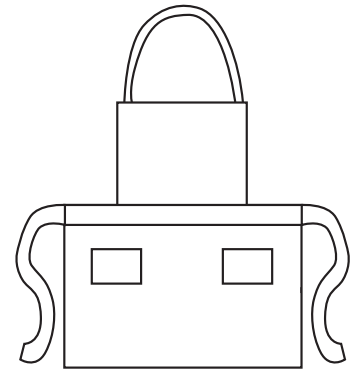
Bake something  
*delicious*  
and share with your gnome-tastic family and friends.



Right sides together.  
Sew around perimeter.  
Leave an opening for turning.



Pin and sew pockets



Topstitch sash to apron